

Annette Sings Anka

150 022 | Annette Funicello

1960 | 12" Standard LP | Disneyland (Yellow Rainbow) | Spain | 33 1/3 RPM | Mono

 The Monkey's Uncle

2003 | Annette Funicello and The Spats

1965 | 7" Standard EP | Merica | Iran | 45 RPM | Mono



[View More Info](#)

 Hey Mama! / Like A Baby

23101/BV 23101 | Annette Funicello

1960 | 7" Standard Single | Buena Vista | Netherlands | 45 RPM | Mono



[View More Info](#)

 Annette's Beach Party

33 VS 563 | Annette Funicello

1963 | 12" Standard LP | Buena Vista Records | France | 33 1/3 RPM | Stereo

 **Annette (The Monkey's Uncle Open-End Interview)**

378 | Annette Funicello and Shirley Burden

1965 | 7" Non-Picture Sleeve EP | Garrison System Ltd. | United States | 33 1/3 RPM | Mono



[View More Info](#)

 The Truth About Youth / I Can't Do The Sum

4-1074 R | Annette Funicello

1962 | 7" Standard Single | Sparton | Canada | 45 RPM | Mono

 The Truth About You / I Can't Do The Sum

4-1074 R | Annette Funicello

1962 | 7" Standard Single | Sparton (White) | Canada | 45 RPM | Mono

 Beach Party / Swingin' and Surfin'

45 EG 9394 | Annette Funicello

1964 | 7" Non-Picture Sleeve Single | Electrola | Germany | 45 RPM | Mono

 Beach Party Surf

45 VS 562 | Annette Funicello

1964 | 7" Standard EP | Buena Vista Records | France | 45 RPM | Mono

 **First Name Initial / My Heart Became Of Age**

45-JAR-233 | Annette Funicello with The Afterbeats

| 7" Non-Picture Sleeve Single | Top Rank International | United Kingdom | 45 RPM | Mono

 First Name Initial / My Heart Became Of Age

45-WD-8 | Annette Funicello with the Afterbeats

1959 | 7" Non-Picture Sleeve Single | Disneyland | Australia | 45 RPM | Mono



Tall Paul

45XP 1046 | *Annette Funicello and The Afterbeats*
1959 | 7" Standard EP | Gala Records | United Kingdom | 45 RPM | Mono



[View More Info](#)

Tall Paul / Ma, He's Making Eyes At me

4-691 R | *Annette Funicello*
| 7" Non-Picture Sleeve Single | Sparton | Canada | 45 RPM | Mono

Lonely Guitar / Wild Willie

4-774 R | *Annette Funicello*
1959 | 7" Non-Picture Sleeve Single | Sparton (Dark Purple) | Canada | 45 RPM | Mono

First Name Initial / My Heart Became Of Age

4-809 R | *Annette Funicello with the Afterbeats*
1959 | 7" Non-Picture Sleeve Single | Sparton (Light Purple) | Canada | 45 RPM | Mono

Teddy / I Love You Baby

4-886 R | *Annette Funicello*
| 7" Non-Picture Sleeve Single | Sparton (Light Purple) | Canada | 45 RPM | Mono

Train Of Love / Tell Me Who Is The Girl

4-896 R | *Annette Funicello*
| 7" Non-Picture Sleeve Single | Sparton (Light Purple) | Canada | 45 RPM | Mono

Pineapple Princess / Luau Cha Cha Cha

4-921 R | *Annette with The Afterbeats*
1960 | 7" Non-Picture Sleeve Single | Sparton | Canada | 45 RPM | Mono

Talk To Me Baby / I Love You Baby

4-948 R | *Annette with The Afterbeats*
| 7" Non-Picture Sleeve Single | Sparton | Canada | 45 RPM | Mono

Talk To Me Baby / I Love You Baby

4-948 R | *Annette Funicello*
1960 | 7" Standard Single | Sparton (White) | Canada | 45 RPM | Mono

Dream Boy / Please, Please, Signore

4-976 R | *Annette Funicello*
1961 | 7" Standard Single | Sparton (White) | Canada | 45 RPM | Mono

Tall Paul / Ma, He's Making Eyes At me

691 R | *Annette Funicello*
| 10" Non-Picture Sleeve Single | Sparton | Canada | 78 RPM | Mono

Beach Party / Promise Me Anything

7 QH 5033 | Annette Funicello

| 7" Standard Single | His Master's Voice | Netherlands | 45 RPM | Mono



[View More Info](#)

Beach Party

810 | Disney Cast

1963 | 10" Non-Picture Sleeve EP | American International | United States | 33 1/3 RPM | Mono

Pajama Party (Radio Spots)

a-14 | Annette Funicello

1964 | 7" Non-Picture Sleeve EP | American International | U.S.A. | 45 RPM | Mono



[View More Info](#)

Annette

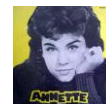
AUSEP-101 | Annette Funicello

1972 | 7" Standard EP | Disneyland | New Zealand | 45 RPM | Mono

Annette Volume Two

AUSEP-129 | Annette Funicello

| 7" Standard EP | Disneyland | New Zealand | 45 RPM | Mono



Golden Hits Of Annette

AUSLP 1008 | Annette Funicello

1981 | 12" Standard LP | Disneyland / EMI Records | Australia | 33 1/3 RPM | Mono

Wild Willie / Lonely Guitar

B 1349 | Annet Funicello

| 7" Standard Single | Metronome | Denmark | 45 RPM | Mono

O Dio Mio

B 1400 | Annet Funicello

| 7" Standard Single | Metronome | Denmark | 45 RPM | Mono

Train Of Love

B 1425 | Annette Funicello

1960 | 7" Standard Single | Metronome | Denmark | 45 RPM | Mono



Pineapple Princess / Luau Cha Cha

B 1441 | Annet Funicello

| 7" Standard Single | Metronome | Denmark | 45 RPM | Mono



Interview Specials With The Stars Of Beach Party

BEACH-763-USA | Dorothy Malone, Annette Funicello and Robert Cummings

1963 | 7" Non-Picture Sleeve EP | American International | U.S.A. | 33 1/3 RPM | Mono



[View More Info](#)

Train Of Love / Tell Me Who's The Girl

BV 23.100 | Annette Funicello

1960 | 7" Standard Single | Buena Vista | Netherlands | 45 RPM | Mono

 First Name Initial / Teddy

BV 23.102 | Annette Funicello

1960 | 7" Standard Single | Buena Vista | Netherlands | 45 RPM | Mono

 Pineapple Princess / Luau Cha-Cha-Cha

BV 23.103 | Annette Funicello

1960 | 7" Standard Single | Buena Vista | Netherlands | 45 RPM | Mono

 It's Really Love / Waiting For You

BV 23.104 | Annette Funicello

1960 | 7" Standard Single | Buena Vista | Netherlands | 45 RPM | Mono

 I Love You / Tell Me That You Love Me

BV 23.105 | Annette Funicello

1960 | 7" Standard Single | Buena Vista | Netherlands | 45 RPM | Mono

 Annette

BV-3301 | Annette Funicello

1959 | 12" Standard LP | Buena Vista Records (Black) | United States | 33 1/3 RPM | Mono



[View More Info](#)

 Annette

BV-3301 | Annette Funicello

1959 | 12" Standard LP | Sparton / Buena Vista Records | Canada | 33 1/3 RPM | Mono

 Annette

BV-3301 | Annette Funicello

1981 | 12" Standard LP | Buena Vista Records (Orange) | New Zealand | 33 1/3 RPM | Mono



[View More Info](#)

 Annette

BV-3301A/BV-EP-3301A | Annette Funicello

1960 | 7" Standard EP | Buena Vista Records (Black) | United States | 45 RPM | Mono

 **Annette Sings Anka**

BV-3302 | Annette Funicello

1960 | 12" Standard LP | Buena Vista Records (Black) | United States | 33 1/3 RPM | Mono



[View More Info](#)

 Annette Sings Anka

BV-3302 | Annette Funicello

1960 | 12" Standard LP | Sparton (Purple) | Canada | 33 1/3 RPM | Mono



Annette Sings Anka

BV-3302 | Annette Funicello

1960 | 12" Standard LP | Buena Vista Records | United States | 33 1/3 RPM | Mono

Hawaiiannette

BV-3303 | Annette Funicello

1960 | 12" Standard LP | Buena Vista Records | United States | 33 1/3 RPM | Mono



[View More Info](#)

Hawaiiannette

BV-3303 | Annette Funicello

1960 | 12" Standard LP | Buena Vista Records | Canada | 33 1/3 RPM | Mono



Hawaiiannette

BV-3303 | Annette Funicello

1981 | 12" Standard LP | Buena Vista Records (Yellow) | New Zealand | 33 1/3 RPM | Mono

Hawaiiannette

BV-3303 | Annette Funicello

1960 | 12" Standard LP | Disneyland (Red) | Australia | 33 1/3 RPM | Mono

Italiannette

BV-3304 | Annette Funicello

1960 | 12" Standard LP | Buena Vista Records | United States | 33 1/3 RPM | Mono



[View More Info](#)

Italiannette

BV-3304 | Annette Funicello

1960 | 12" Standard LP | Sparton | Canada | 33 1/3 RPM | Mono

Dance Annette

BV-3305 | Annette Funicello

1961 | 12" Standard LP | Buena Vista Records (Black) | United States | 33 1/3 RPM | Mono

Annette - The Story Of My Teens

BV-3312 | Annette Funicello

1961 | 12" Gatefold Book LP | Buena Vista Records | United States | 33 1/3 RPM | Mono



Muscle Beach Party

BV-3314 | Annette Funicello

1964 | 12" Standard LP | Buena Vista Records | United States | 33 1/3 RPM | Mono

Muscle Beach Party

BV-3314 | Annette Funicello

| 12" Standard LP | Buena Vista Records (Red) | Canada | 33 1/3 RPM | Mono



Annette's Beach Party

BV-3316 | Annette Funicello

1963 | 12" Standard LP | Buena Vista Records (Rainbow) | United States | 33 1/3 RPM | Mono

Annette's Beach Party

BV-3316 | Annette Funicello

1963 | 12" Standard LP | Buena Vista Records (Black) | United States | 33 1/3 RPM | Mono

Annette Praia Dos Amores

BV-3316 | Annette Funicello

1963 | 12" Standard LP | Buena Vista Records | Brazil | 33 1/3 RPM | Mono



Annette's Beach Party

BV-3316 | Annette Funicello

1963 | 12" Standard LP | Buena Vista Records (Red) | Canada | 33 1/3 RPM | Mono

Annette's Beach Party

BV-3316 | Annette Funicello

1981 | 12" Standard LP | Buena Vista Records (Orange) | New Zealand | 33 1/3 RPM | Stereo

Annette's Beach Party

BV-3316/STER-3316 | Annette Funicello

1963 | 12" Standard LP | Buena Vista Records (Black) | United States | 33 1/3 RPM | Stereo

Annette On Campus

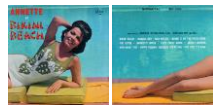
BV-3320 | Annette Funicello - Cheers, The Wellingtons

1964 | 12" Gatefold LP | Buena Vista Records | United States | 33 1/3 RPM | Mono

Annette At Bikini Beach

BV-3324 | Annette Funicello

1964 | 12" Gatefold LP | Buena Vista Records | United States | 33 1/3 RPM | Mono



[View More Info](#)

Annette At Bikini Beach

BV-3324 | Annette Funicello

1981 | 12" Standard LP | Buena Vista Records (Orange) | New Zealand | 33 1/3 RPM | Stereo

Annette's Pajama Party

BV-3325 | Annette Funicello and Dorothy Lamour

1964 | 12" Gatefold LP | Buena Vista Records | United States | 33 1/3 RPM | Mono

Annette Sings Golden Surfin' Hits

BV-3327 | Annette Funicello

1965 | 12" Standard LP | Buena Vista Records | United States | 33 1/3 RPM | Mono



Annette Sings Golden Surfin' Hits

BV-3327 | Annette Funicello

1965 | 12" Standard LP | Buena Vista Records | New Zealand | 33 1/3 RPM | Mono

 Something Borrowed, Something Blue

BV-3328 | Annette Funicello

1965 | 12" Gatefold LP | Buena Vista Records | United States | 33 1/3 RPM | Mono



[View More Info](#)

 Walt Disney's Presents The Original Cast Babes In Toyland

BV-4022 | Ray Bolger, Tommy Sands, Annette and Ed Wynn

1961 | 12" Gatefold LP | Buena Vista Records Records (Black) | United States | 33 1/3 RPM | Mono



[View More Info](#)

 Walt Disney's Presents The Original Cast Babes In Toyland

BV-4022 | Ray Bolger, Tommy Sands, Annette and Ed Wynn

1961 | 12" Gatefold LP | Buena Vista Records Records (Blue) | United States | 33 1/3 RPM | Mono



[View More Info](#)

 Walt Disney's Presents The Original Cast Babes In Toyland

BV-4022 | Ray Bolger, Tommy Sands, Annette and Ed Wynn

1961 | 12" Gatefold LP | Buena Vista Records Records / Sparton | Canada | 33 1/3 RPM | Mono

 **Annette Funicello**

BV-4037 | Annette Funicello

1972 | 12" Standard LP | Buena Vista Records | United States | 33 1/3 RPM | Mono

 Annette Funicello

BV-4037 | Annette Funicello

1981 | 12" Standard LP | Buena Vista Records Records (Gold) | United States | 33 1/3 RPM | Mono

 Annette

BVEP-3301A | Annette Funicello

1959 | 7" Standard EP | Disneyland | United States | 33 1/3 RPM | Mono

 Treat Him Nicely / Promise Me Anything;

BVF-427 | Annette Funicello

1963 | 7" Non-Picture Sleeve Single | Buena Vista Records (Rainbow) | United States | 45 RPM | Mono

 Beach Party / Treat Him Nicely

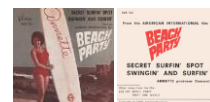
BVS 701 | Annette Funicello

| 7" Standard Single | Buena Vista Records | Italy | 45 RPM | Stereo

 Swingin' And Surfin' / Secret Surfin' Spot

BVS 702 | Annette Funicello

1963 | 7" Standard Single | Buena Vista Records (Rainbow) | Italy | 45 RPM | Stereo



[View More Info](#)



The Parent Trap / Let's Get Together

C-803 | Tommy Sands and Annette Funicello

1961 | 7" Standard Single | Buena Vista Records (Black) | United States | 33 1/3 RPM | Mono



[View More Info](#)

Annette's Beach Party

CLP 1782 | Annette Funicello

1963 | 12" Standard LP | Buena Vista Records | United Kingdom | 33 1/3 RPM | Mono

Pineapple Princess

COL. 3390 | Annette Funicello

| 7" Non-Picture Sleeve Single | Collectibles | United States | 45 RPM | Mono

Tall Paul / Let's Get Together

COL. 3391 | Annette Funicello and Hayley Mills

| 7" Non-Picture Sleeve Single | Collectibles | United States | 45 RPM | Mono

Walt Disney Presents The Misadventures Of Merlin Jones

CR-2567/CR-2568 | Annette Funicello, Tommy Kirk and Disney Cast

1963 | 12" Non-Picture Sleeve EP | Buena Vista Distribution Co., Inc. | United States | 33 1/3 RPM | Mono



[View More Info](#)

The Misadventures Of Merlin Jones

CR-2569 | Disney Cast

1963 | 12" Non-Picture Sleeve EP | Buena Vista Distribution Co., Inc. | United States | 33 1/3 RPM | Mono

Walt Disney's The Monkey's Uncle

CR-2687 | Disney Cast

1964 | 12" Non-Picture Sleeve EP | Buena Vista Distribution Co., Inc. | United States | 33 1/3 RPM | Mono



Words To Grow By

DBR-79 | Annette Funicello, Jimmie Dodd and Darlene Gillespie

1958 | 10" Standard EP | Mickey Mouse Club | United States | 78 RPM | Mono

Words To Grow By

DBR-79 | Jimmie Dodd, Doreen, Cubby and Annette

1958 | 7" Standard EP | Official Mickey Mouse Club (Yellow) | United States | 45 RPM | Mono



[View More Info](#)

Train Of Love

DEP 501 | Annette Funicello

1960 | 7" Standard EP | Disneyland | Italy | 45 RPM | Mono

Like A Baby

DEP 502 | Annette Funicello

1960 | 7" Standard EP | Disneyland | Italy | 45 RPM | Mono

Annette And Hayley Mills (Singing 10 Of Their Greatest All Time Hits)

DL-3508 | Annette Funicello and Hayley Mills

1964 | 12" Paper Sleeve LP | Buena Vista Records (Rainbow) | United States | 33 1/3 RPM | Mono



Annette And Hayley Mills (Singing 10 Of Their Greatest All Time Hits)

DL-3508 | Annette Funicello and Hayley Mills

1964 | 12" Paper Sleeve LP | Buena Vista Records (White) | United States | 33 1/3 RPM | Mono



Annette And Hayley Mills (Singing 10 Of Their Greatest All Time Hits)

DL-3508 | Annette Funicello and Hayley Mills

1964 | 12" Paper Sleeve LP | Disneyland (Yellow Plain) | United States | 33 1/3 RPM | Mono



Walt Disney's Flubber Song

DL-555 | Fred MacMurray

1968 | 7" Standard Single | Disneyland | United States | 45 RPM | Mono



[View More Info](#)

Walt Disney Presents State And College Songs

DQ-1293 | Annette Funicello and Disney Cast

1967 | 12" Standard LP | Disneyland | United States | 33 1/3 RPM | Stereo

Train Of Love / I Love You

DSP 201 | Annette Funicello

1960 | 7" Standard Single | Disneyland | Italy | 45 RPM | Mono

I Love You Baby / Lonely Girl

DSP 202 | Annette Funicello

1960 | 7" Standard Single | Disneyland | Italy | 45 RPM | Mono

Like A Baby / Teddy

DSP 203 | Annette Funicello

1960 | 7" Standard Single | Disneyland | Italy | 45 RPM | Mono

It's Really Love / Hey, Mama

DSP 204 | Annette Funicello

1960 | 7" Standard Single | Disneyland | Italy | 45 RPM | Mono

Danceannette / Rock-A-Charleston (Flapper Flip)

DSP 205 | Annette Funicello

| 7" Standard Single | Disneyland | Italy | 45 RPM | Mono

Rock-A-Cha / The Hokey Pokey

DSP 206 | Annette Funicello

| 7" Standard Single | Disneyland | Italy | 45 RPM | Mono

The Glide (Part 2) / The Huckle-Buck

DSP 207 | Annette Funicello

| 7" Standard Single | Disneyland | Italy | 45 RPM | Mono

Ballin' The Jack / I Could Have Danced All Night

DSP 208 | Annette Funicello

| 7" Standard Single | Disneyland (Red) | Italy | 45 RPM | Mono

Luau Cha Cha Cha / Pineapple Princess

DSP 209 | Annette Funicello

| 7" Standard Single | Disneyland | Italy | 45 RPM | Mono

O Dio Mio (Tesoro Mio) / It Took Dreams

DSP 210 | Annette Funicello

| 7" Standard Single | Disneyland | Italy | 45 RPM | Mono

Seven Moons / That Crazy Place In Outer Space

DSP 213 | Annette Funicello, Dany Saval and Tom Tyron

1962 | 7" Standard Single | Buena Vista Records | Italy | 45 RPM | Mono



Let's Get Together / The Parent Trap

DSP 215 | Hayley Mills

1962 | 7" Standard Single | Buena Vista Records | Italy | 45 RPM | Mono



Annette

EP 6015 | Annette Funicello

1960 | 7" Standard EP | Buena Vista | Netherlands | 45 RPM | Mono



How Will I Know My Love? / Don't Jump To Conclusions

F-102 | Annette Funicello

1958 | 7" Standard Single | Disneyland | United States | 45 RPM | Mono

How Will I Know My Love?

F-102 | Annette Funicello

1958 | 7" Non-Picture Sleeve Single | Disneyland (White) | United States | 45 RPM | Mono

That Crazy Place In Outer Space / Gold Doubloons & Pieces Of Eight

F-114 | Annette Funicello with Jet's Quartet

1958 | 7" Standard Single | Disneyland (Purple) | United States | 45 RPM | Mono

That Crazy Place In Outer Space / Gold Doubloons & Pieces Of Eight

F-114 | Annette Funicello with Jet's Quartet

1958 | 7" Non-Picture Sleeve Single | Disneyland (White) | United States | 45 RPM | Mono



Tall Paul / Ma, He's Making Eyes At Me

F-118 | *Annette and The Afterbeats*

1958 | 7" Non-Picture Sleeve Single | *Disneyland (Purple)* | United States | 45 RPM | Mono

Tall Paul / Ma, He's Making Eyes At Me

F-118 | *Annette and The Afterbeats*

1958 | 7" Non-Picture Sleeve Single | *Disneyland (Purple)* | Australia | 45 RPM | Mono

Tall Paul / Ma, He's Making Eyes At Me

F-118 | *Annette and The Afterbeats*

1958 | 7" Non-Picture Sleeve Single | *Buena Vista Records (Blue Spectrum)* | United States | 45 RPM | Mono

Tall Paul / Lonely Guitar

F-118 | *Annette Funicello*

| 7" Standard Single | *Disneyland* | Italy | 45 RPM | Mono

Tall Paul / Ma, He's Making Eyes At Me

F-118 | *Annette and The Afterbeats*

1958 | 7" Non-Picture Sleeve Single | *Disneyland (White)* | United States | 45 RPM | Mono

Lonely Guitar

F-122 | *Annette Funicello*

| 7" Standard Single | *Disneyland* | United States | 45 RPM | Mono

Jo Jo The Dog Faced Boy / Lonely Guitar

F-336 | *Annette Funicello*

1959 | 7" Non-Picture Sleeve Single | *Buena Vista Records (Black)* | United States | 45 RPM | Mono

Jo Jo The Dog Faced Boy / Lonely Guitar

F-336 | *Annette Funicello*

1959 | 7" Non-Picture Sleeve Single | *Buena Vista Records (White)* | United States | 45 RPM | Mono

Jo Jo The Dog Faced Boy / Love Me Forever

F-336 | *Annette Funicello*

1959 | 7" Non-Picture Sleeve Single | *Buena Vista Records (Black)* | United States | 45 RPM | Mono

Jo Jo The Dog Faced Boy / Love Me Forever

F-336 | *Annette Funicello*

1959 | 7" Non-Picture Sleeve Single | *Buena Vista Records (Blue Spectrum)* | United States | 45 RPM | Mono

Wild Willie / Lonely Guitar

F-339 | *Annette Funicello*

1959 | 7" Standard Single | *Buena Vista Records (Black)* | United States | 45 RPM | Mono





Lonely Guitar / Wild Willie

F-339 | Annette Funicello

1959 | 7" Standard Single | Buena Vista Records (Black) | United States | 45 RPM | Mono

Wild Willie / Lonely Guitar

F-339 | Annette Funicello

1959 | 7" Standard Single | Sparton | United States | 45 RPM | Mono

Wild Willie / Lonley Guitar

F-339 | Annette Funicello

1959 | 7" Non-Picture Sleeve Single | Buena Vista Records | United States | 45 RPM | Mono

My Heart Became Of Age / Especially For You

F-344 | Annette Funicello

1959 | 7" Standard Single | Buena Vista Records | United States | 45 RPM | Mono

First Name Initial / My Heart Became Of Age (black text)

F-349 | Annette Funicello with the Afterbeats

1959 | 7" Standard Single | Buena Vista Records (Black) | United States | 45 RPM | Mono



First Name Initial / My Heart Became Of Age (teal text)

F-349 | Annette Funicello with the Afterbeats

1959 | 7" Standard Single | Buena Vista Records (Black) | United States | 45 RPM | Mono

First Name Initial / My Heart Became Of Age

F-349 | Annette Funicello with the Afterbeats

1959 | 7" Non-Picture Sleeve Single | Buena Vista Records (Blue Spectrum) | United States | 45 RPM | Mono

First Name Initial / My Heart Became Of Age

F-349 | Annette Funicello with the Afterbeats

1959 | 7" Standard Single | Buena Vista Records (White) | United States | 45 RPM | Mono

O Dio Mio / It Took Dreams

F-354 | Annette Funicello

1959 | 7" Standard Single | Buena Vista Records | United States | 45 RPM | Mono



O Dio Mio / It Took Dreams (small spindle hole)

F-354 | Annette Funicello

1959 | 7" Standard Single | Buena Vista Records | United States | 45 RPM | Mono



Train Of Love / Tell Me Who's The Girl

F-359 | Annette Funicello

1960 | 7" Non-Picture Sleeve Single | Buena Vista Records (Black) | United States | 45 RPM | Mono

Pineapple Princess / Luau Cha Cha Cha

F-362 | Annette Funicello

1960 | 7" Standard Single | Buena Vista Records (Black) | United States | 45 RPM | Mono

Pineapple Princess / Luau Cha Cha Cha (catalog # on front)

F-362 | Annette Funicello

1960 | 7" Standard Single | Buena Vista Records (Black) | United States | 45 RPM | Mono

Pineapple Princess / Luau Cha Cha Cha

F-362 | Annette with The Afterbeats

1960 | 7" Non-Picture Sleeve Single | Buena Vista Records (Blue Spectrum) | United States | 45 RPM | Mono

Talk To Me, Baby / I Love You, Baby

F-369 | Annette Funicello and Paul Anka

1960 | 7" Standard Single | Buena Vista Records (Black) | United States | 45 RPM | Mono



Dream Boy / Please, Please Signore

F-374 | Annette Funicello

1961 | 7" Standard Single | Buena Vista Records (Black) | United States | 45 RPM | Mono



Dream Boy / Please, Please Signore

F-374 | Annette Funicello

1961 | 7" Standard Single | Buena Vista Records (White) | United States | 45 RPM | Mono



Indian Giver / Mama, Mama Rosa (Where's The Spumoni)

F-375 | Annette Funicello with the Up Beats

1961 | 7" Standard Single | Buena Vista Records | United States | 45 RPM | Mono



[View More Info](#)

Flubber Song / Serendipity

F-381 | Fred MacMurray and Annette Funicello

1961 | 7" Standard Single | Buena Vista Records | United States | 45 RPM | Mono



[View More Info](#)

Hawaiian Love-Talk / Blue Muu Muu

F-384 | Annette Funicello

1961 | 7" Standard Single | Buena Vista Records | United States | 45 RPM | Mono

Hawaiian Love-Talk / Blue Muu Muu

F-384 | Annette Funicello

1961 | 7" Standard Single | Buena Vista Records (White) | United States | 45 RPM | Mono

Dreamin' About You / Strummin' Song

F-388 | Annette Funicello and the Vonnair Sisters

1961 | 7" Standard Single | Buena Vista Records (Black) | United States | 45 RPM | Mono

Dreamin' About You / Strummin' Song

F-388 | Annette Funicello and the Vonnair Sisters

1961 | 7" Standard Single | Buena Vista Records (White) | United States | 45 RPM | Mono

Seven Moons (of Beta-Lyrae) / That Crazy Place In Outer Space

F-392 | Dany Saval and Tom Tyron and Annette with Jet's Quartet

1962 | 7" Standard Single | Buena Vista Records (Black) | United States | 45 RPM | Mono



Seven Moons (of Beta-Lyrae)

F-392-P | Dany Saval and Tom Tyron

1962 | 7" Non-Picture Sleeve Single | Buena Vista Records (White) | United States | 45 RPM | Mono



[View More Info](#)

The Truth About Youth / I Can't Do The Sum

F-394 | Annette Funicello

1962 | 7" Standard Single | Buena Vista Records | United States | 45 RPM | Mono

The Truth About Youth / I Can't Do The Sum

F-394 | Annette Funicello

1962 | 7" Standard Single | Buena Vista Records (White) | United States | 45 RPM | Mono

My Little Grass Shack / Hukilau Song

F-400 | Annette Funicello

1962 | 7" Standard Single | Buena Vista Records | United States | 45 RPM | Mono

My Little Grass Shack / Hukilau Song

F-400 | Annette Funicello

1962 | 7" Standard Single | Buena Vista Records (White) | United States | 45 RPM | Mono

Mister Piano Man / He's My Ideal

F-405 | Annette Funicello

1962 | 7" Standard Single | Buena Vista Records (Black) | United States | 45 RPM | Mono



Mister Piano Man / He's My Ideal

F-405 | Annette Funicello

1962 | 7" Standard Single | Buena Vista Records (White) | United States | 45 RPM | Mono



Bella Bella Florence / Canzone D'Amore

F-407 | Annette Funicello, Angelos Prioli and Gianni Marzocchi

1962 | 7" Standard Single | Buena Vista Records (Black) | United States | 45 RPM | Mono



[View More Info](#)

Bella Bella Florence / Canzone D'Amore

F-407 | Annette Funicello, Angelos Prioli and Gianni Marzocchi

1962 | 7" Standard Single | Buena Vista Records (White) | United States | 45 RPM | Mono



[View More Info](#)

Teenage Wedding / Walkin' And Talkin'

F-414 | Annette Funicello

1963 | 7" Standard Single | Buena Vista Records (Black) | United States | 45 RPM | Mono



[View More Info](#)

 Teenage Wedding / Walkin' And Talkin'

F-414 | Annette Funicello

1963 | 7" Standard Single | Buena Vista Records (Red) | Canada | 45 RPM | Mono

 Teenage Wedding / Walkin' And Talkin'

F-414 | Annette Funicello

1963 | 7" Standard Single | Buena Vista Records (White) | United States | 45 RPM | Mono

 **Teenage Wedding / Walkin' And Talkin'**

F-414/BVF-414 | Annette Funicello

1963 | 7" Standard Single | Buena Vista Records | United States | 45 RPM | Mono

 **Treat Him Nicely / Promise Me Anything**

F-427 | Annette Funicello

1963 | 7" Standard Single | Buena Vista Records | United States | 45 RPM | Mono

 **Promise Me Anything / Treat Him Nicely**

F-427 | Annette Funicello

1963 | 7" Non-Picture Sleeve Single | Buena Vista Records | Canada | 45 RPM | Mono

 Promise Me Anything / Treat Him Nicely

F-427 | Annette Funicello

1963 | 7" Standard Single | Buena Vista Records (White) | U.S.A. | 45 RPM | Mono

 Merlin Jones / Scrambled Egghead

F-431 | Annette Funicello, Tommy Kirk and The Wellingtons

1963 | 7" Standard Single | Buena Vista Records (Rainbow) | United States | 45 RPM | Mono

 **Custom City / Rebel Rider**

F-432 | Annette Funicello

1964 | 7" Non-Picture Sleeve Single | Buena Vista Records | United States | 45 RPM | Mono

 Muscle Beach Party / I Dream About Frankie

F-433 | Annette Funicello

1964 | 7" Standard Single | Buena Vista Records | United States | 45 RPM | Mono

 **Muscle Beach Party / I Dream About Frankie**

F-433 | Annette Funicello

1964 | 7" Standard Single | Buena Vista Records (White) | United States | 45 RPM | Mono



Bikini Beach Party / The Clyde

F-436 | Annette Funicello

1964 | 7" Standard Single | Buena Vista Records | United States | 45 RPM | Mono

Bikini Beach Party

F-436 | Annette Funicello

1964 | 7" Standard Single | Buena Vista Records | United States | 45 RPM | Mono

The Clyde / The Wah Watusi

F-437 | Annette Funicello

1964 | 7" Non-Picture Sleeve Single | Buena Vista Records | United States | 45 RPM | Mono

The Clyde / The Wah Watusi

F-437 | Annette Funicello

1964 | 7" Non-Picture Sleeve Single | Buena Vista Records (White) | United States | 45 RPM | Mono

Something Borrowed, Something Blue / How Will I Know My Love?

F-438 | Annette Funicello

1965 | 7" Standard Single | Buena Vista Records | United States | 45 RPM | Mono



Something Borrowed, Something Blue / How Will I Know My Love

F-438 | Annette Funicello

1965 | 7" Standard Single | Buena Vista Records (White) | United States | 45 RPM | Mono



The Monkey's Uncle / How Will I Know My Love

F-440 | Annette Funicello and The Beach Boys

1965 | 7" Standard Single | Buena Vista Records (Rainbow) | United States | 45 RPM | Mono



[View More Info](#)

The Monkey's Uncle / How Will I Know My Love

F-440 | Annette Funicello and The Beach Boys

1965 | 7" Standard Single | Buena Vista Records (White) | United States | 45 RPM | Mono



[View More Info](#)

Boy To Love / No One Else Could Be Prouder

F-442 | Annette Funicello

1965 | 7" Non-Picture Sleeve Single | Buena Vista Records | United States | 45 RPM | Mono

Boy To Love / No One Else Could Be Prouder

F-442 | Annette Funicello

1965 | 7" Non-Picture Sleeve Single | Buena Vista Records (White) | United States | 45 RPM | Mono

No Way To Go But Up / Cyrstal Ball

F-450 | Annette Funicello

1966 | 7" Non-Picture Sleeve Single | Buena Vista Records | United States | 45 RPM | Mono

No Way To Go But Up / Cyrstal Ball

F-450 | Annette Funicello

1966 | 7" Non-Picture Sleeve Single | Buena Vista Records (White) | United States | 45 RPM | Mono

The Computer Wore Tennis Shoes / Merlin Jones

F-475 | *The Electric Tennis Shoes*, Annette Funicello and The Wellingtons

1969 | 7" Standard Single | Buena Vista Records (Rainbow) | United States | 45 RPM | Stereo



The Computer Wore Tennis Shoes / Merlin Jones

F-475 | *The Electric Tennis Shoes*, Annette Funicello and The Wellingtons

1969 | 7" Standard Single | Buena Vista Records (White) | United States | 45 RPM | Stereo



The Parent Trap / Let's Get Together

F-802 | Tommy Sands and Annette Funicello

1962 | 7" Standard Single | Buena Vista Records | United States | 45 RPM | Mono



[View More Info](#)

The Parent Trap / Let's Get Together

F-802 | Annette Funicello and Tommy Sands

1962 | 7" Standard Single | Buena Vista Records (White) | United States | 45 RPM | Mono



Annette

GB 101-001 | Annette Funicello

1959 | 12" Standard LP | Buena Vista Records / Discos Gamma (Blue) | Mexico | 33 1/3 RPM | Mono

Teddy

HL 087-01 | Annette Funicello

1961 | 7" Standard EP | Disneyland / Hispa Vox | Spain | 45 RPM | Mono

Muchacha Solitaria

HL 087-02 | Annette Funicello

1961 | 7" Standard EP | Disneyland / Hispa Vox | Spain | 45 RPM | Mono

Entonces, Adios

HL 087-03 | Annette Funicello

1961 | 7" Standard EP | Disneyland / Hispa Vox | Spain | 45 RPM | Mono

Pablo Gigante

HL 087-04 | Annette Funicello

1961 | 7" Standard EP | Disneyland / Hispa Vox | Spain | 45 RPM | Mono

O Dio Mio

HL 087-05 | Annette Funicello

1961 | 7" Standard EP | Disneyland / Hispa Vox | Spain | 45 RPM | Mono



Guitarra Solitaria

HL 087-06 | Annette Funicello

1961 | 7" Standard EP | Disneyland / Hispavox | Spain | 45 RPM | Mono

Annette Canta

HL 087-07 | Annette Funicello

1960 | 7" Standard EP | Disneyland / Hispavox (Red) | Spain | 45 RPM | Mono



[View More Info](#)

Annette's

HS-253 | Annette Funicello

1963 | 12" Standard Red Vinyl LP | Hae Shan Record | China | 33 1/3 RPM | Stereo

O Dio Mio

JAR-343 | Annette Funicello

| 7" Non-Picture Sleeve Single | Top Rank International | United Kingdom | 45 RPM | Mono

Kidnapped Radio Announcements

KK-2 | Annette Funicello

| 12" Non-Picture Sleeve Red Vinyl EP | Walt Disney Productions | United States | 33 1/3 RPM | Mono

Some Day My Prince Will Come

LG-739 | Adriana Caselotti, Annette Funicello and Disney Cast

1962 | 7" Standard Single | Disneyland | United States | 45 RPM | Mono



[View More Info](#)

How Will I Know My Love / Annette

LG-758 | Jimmie Dodd and Annette

1962 | 7" Standard Single | Disneyland (Black) | United States | 45 RPM | Mono



[View More Info](#)

How Will I Know My Love / Annette

LG-758 | Jimmie Dodd and Annette

1962 | 6" Standard Single | Disneyland (Light Blue) | United States | 78 RPM | Mono



How Will I Know My Love / Annette

LG-758 | Jimmie Dodd and Annette

1962 | 6" Standard Single | Disneyland (Light Blue) | United States | 78 RPM | Mono



[View More Info](#)

Muscle Beach Party (Open-End Interviews)

MBP-264-USA | Frankie Avalon, John Ashley, Annette Funicello and Don Rickles

1964 | 7" Non-Picture Sleeve EP | Garrison System Ltd. | United States | 33 1/3 RPM | Mono

[View More Info](#)

Jo-Jo, The Dog-Faced Boy

MEP 1741 | Annet Funicello

| 7" Standard EP | Metronome | Denmark | 45 RPM | Mono

Wild Willie

MEP 1742 | Annet Funicello

| 7" Standard EP | Metronome | Denmark | 45 RPM | Mono

 **O Dio Mio**

MEP 1759 | Annet Funicello

1960 | 7" Standard EP | Metronome | Denmark | 45 RPM | Mono



[View More Info](#)

 Train Of Love

MEP 1772 | Annet Funicello

| 7" Standard EP | Metronome | Denmark | 45 RPM | Mono

 Annette Sings Anka

MLP 15043 | Annet Funicello

| 12" Standard LP | Metronome | Denmark | 33 1/3 RPM | Mono

 Annette

NEP 850 | Annette Funicello

| 7" Standard EP | Renown | South Africa | 45 RPM | Mono

 **Muscle Beach Party**

POP 1270 | Annette Funicello

1964 | 7" Non-Picture Sleeve Single | H.M.V. | United Kingdom | 45 RPM |

 Pajama Party

PP-1064-USA | Disney Cast

1964 | 7" Non-Picture Sleeve EP | American International | United States | 33 1/3 RPM | Mono

 Beach Party

PPL-1119 | Annette Funicello

1963 | 10" Standard Green Vinyl LP | | Singapore | 33 1/3 RPM | Mono

 Beach Party / Charade

RL 1006 | Annette Funicello and others

| 12" Standard LP | ABC Records | South Korea | 33 1/3 RPM |

 Annette's Beach Party

RNDF 204 | Annette Funicello

1984 | 12" Standard LP | Rhino Records | United States | 33 1/3 RPM | Stereo



[View More Info](#)

 Muscle Beach Party

RNDF 205 | Annette Funicello

1984 | 12" Standard LP | Rhino Records | United States | 33 1/3 RPM | Stereo



[View More Info](#)

The Best Of Annette

RNDF 206 | Annette Funicello

1984 | 12" Standard LP | Rhino Records | United States | 33 1/3 RPM | Stereo

 The Best Of Annette

RNLP 702 | Annette Funicello

1984 | 12" Die-Cut Picture Disc LP | Rhino Records | United States | 33 1/3 RPM | Stereo



[View More Info](#)

 Treat Him Nicely / Pineapple Princess

RR-105 | Annette Funicello

| 7" Non-Picture Sleeve Single | Record Rarities | United States | 45 RPM | Mono

 Ma He's Making Eyes At Me / Tall Paul

S 25005 | Annet Funicello

| 7" Standard Single | Metronome | Denmark | 45 RPM | Mono

 Annette's Scrapbook

SM-10011 | Annette Funicello

1981 | 12" Standard LP | Silhouette Music | United States | 33 1/3 RPM | Stereo

 **Walt Disney's Snow White And The Seven Dwarfs**

ST-3906 | Annette Funicello -- narrator, -- Adriana Caselotti, Harry Stockwell and The Dwarf Chorus

1960 | 12" Magic Mirror Story Teller LP | Disneyland (Purple) | United States | 33 1/3 RPM | Mono



[View More Info](#)

 Muscle Beach Party

STER-3314 | Annette Funicello

1964 | 12" Standard LP | Buena Vista Records | United States | 33 1/3 RPM | Stereo

 Muscle Beach Party

STER-3314/BV3314 | Annette Funicello

1981 | 12" Standard LP | Disneyland/EMI Records (Red) | New Zealand | 33 1/3 RPM | Stereo

 Annette On Campus

STER-3320 | Annette Funicello - Cheers, The Wellingtons

1964 | 12" Gatefold LP | Buena Vista Records | United States | 33 1/3 RPM | Stereo

 Annette At Bikini Beach

STER-3324 | Annette Funicello

1964 | 12" Gatefold LP | Buena Vista Records | United States | 33 1/3 RPM | Stereo

 Annette's Pajama Party

STER-3325 | Annette Funicello and Dorothy Lamour

1964 | 12" Gatefold LP | Buena Vista Records | United States | 33 1/3 RPM | Stereo



[View More Info](#)

Annette Sings Golden Surfin' Hits

STER-3327 | Annette Funicello

1965 | 12" Standard LP | Buena Vista Records | United States | 33 1/3 RPM | Stereo

 Something Borrowed, Something Blue

STER-3328 | Annette Funicello

1965 | 12" Gatefold LP | Buena Vista Records | United States | 33 1/3 RPM | Stereo



[View More Info](#)

 Walt Disney's Presents The Original Cast Babes In Toyland

STER-4022 | Ray Bolger, Tommy Sands, Annette and Ed Wynn

1961 | 12" Gatefold LP | Buena Vista Records Records (Black) | United States | 33 1/3 RPM | Stereo



[View More Info](#)

 Walt Disney's Presents The Original Cast Babes In Toyland

STER-4022 | Ray Bolger, Tommy Sands, Annette and Ed Wynn

1961 | 12" Gatefold LP | Buena Vista Records Records (Black) | United States | 33 1/3 RPM | Stereo



[View More Info](#)

 Annette: 25 Annette Funicello Classics

TMAK 077 | Annette Funicello

1983 | 12" Gatefold LP | Telmak | Australia | 33 1/3 RPM | Mono



[View More Info](#)

 Muscle Bustle / Pajama Party

UNKNOWN | Annette Funicello

| 7" Non-Picture Sleeve Single | Buena Vista Records | U.S.A. | 45 RPM | Mono

 Beach Party (Radio Spots)

Unnumbered | Annette Funicello

1973 | 7" Non-Picture Sleeve EP | American International | U.S.A. | 45 RPM | Mono



[View More Info](#)

 Dance Annette

WDL-3305 | Annette Funicello

1961 | 12" Standard LP | Disneyland (Red) | Australia | 33 1/3 RPM | Mono

 Annette

WLD 12.501 | Annette Funicello

| 7" Non-Picture Sleeve EP | Buena Vista Records / Vega | France | 45 RPM | Mono

 Tall Paul / Ma, He's Making Eyes At Me

WLD-500 | Annette Funicello

| 7" Non-Picture Sleeve Single | Disneyland / Buena Vista Records (Red) | France | 45 RPM | Mono

Total Records: 230